

Event Technology



 **Bals**

Simply. Well. Connected.



Simply. Well. Connected. The Bals brand has stood for this for over six decades. To us, maximum product quality and reliability are just as important as having the best possible personal connections with our customers and business partners. Our products prove themselves around the world and in a wide variety of applications. At Bals, **“Made in Germany”** stands for a quality standard that offers you optimum safety.



Two modern factories a consistent quality standard

From the beginning the headquarters of our company is located in Kirchhudem-Albaum (North-Rhine-Westphalia). Product development, marketing and sales, as well as administration are located here.

The factory in Freiwalde (Brandenburg), built in 1994, has state-of-the-art production facilities for fully-automatic manufacturing of unique CEE plugs and connectors as well as a highly-effective logistics centre.



CEE plugs and connectors for the world market

As an independent, medium-sized, family-owned company, we produce standardised industrial plugs and sockets acc. to IEC 309 1-2 as well as plug and socket systems and distributors for the global market. We set new technical standards with innovations and ground-breaking, partially patented new developments such as MULTI-GRIP or QUICK-CONNECT. Our products are sold in more than 80 countries.



Our responsibility to the highest quality

Quality does not permit any compromise. This has always been the maxim at Bals. The ISO-9001-certified production process in all factories ensures the well-known high product quality. This proof of quality is reflected in patents, certificates from German and foreign testing institutes, as well as the specification of Bals products by highly renowned companies. Innovation is an important quality benchmark for us. This way, we are always setting new standards with intelligent solutions that bring the user sustainable advantages.

Panel Mounting Socket Outlet Quick-Connect

- Screwless terminals
- Kontex contact
- Nickel plated contacts
- Flange 75 x 75 mm
- Protection degree IP44



Fig.: Type 130274

2P+E Ampere	3P+E Poles	230V 50-60 Hz			400V 50-60 Hz			Qty	9 each
		3pol 6h	4pol 9h	5pol 9h	3pol 9h	4pol 6h	5pol 6h		
16	3	130269					10	110	
16	4				130270			10	150
16	5				130271			10	170
32	3	130272					10	190	
32	4				130273			10	205
32	5				130274			10	225

Panel Mounting Socket Outlet

- Screw terminals
- Flange 107 x 100 mm
- Kontex contact
- Nickel plated contacts
- Box terminals
- Protection degree IP44



Fig.: Type 130276

2P+E Ampere	3P+E Poles	230V 50-60 Hz			400V 50-60 Hz			Qty	9 each
		3pol 6h	4pol 9h	5pol 9h	3pol 9h	4pol 6h	5pol 6h		
63	3	130275					5	415	
63	5				130276			5	490

Panel Mounting Socket Outlet

- Screw terminals
- Flange 107 x 100 mm
- Kontex contact
- Nickel plated contacts
- Box terminals
- Protection degree IP67



Fig.: Type 130276

2P+E Ampere	3P+E Poles	230V 50-60 Hz			400V 50-60 Hz			Qty	9 each
		3pol 6h	4pol 9h	5pol 9h	3pol 9h	4pol 6h	5pol 6h		
63	3	130315					5	415	
63	5				130196			5	570

Panel Mounting Socket Quick-Connect

- Screwless terminals
- 20° angled
- Kontex contact
- Nickel plated contacts
- Flange 85 x 85 mm
- Protection degree IP44



Fig.: Type 120441

2P+E Ampere	3P+E Poles	230V 50-60 Hz			400V 50-60 Hz			Qty	9 each
		3pol 6h	4pol 9h	5pol 9h	3pol 9h	4pol 6h	5pol 6h		
16	3	120436					10	120	
16	4				120437			10	140
16	5				120438			10	145
32	3	120439					10	200	
32	4				120440			10	230
32	5				120441			10	265

Plug Quick-Connect

- Screwless terminals
- Screwless enclosure connection, snap-in lock
- Special gland, simultaneous cable gland and seal
- Protection degree IP44
- Nickel plated contacts



Fig.: Type 210791

2P+E Ampere	3P+E Poles	230V 50-60 Hz			400V 50-60 Hz			Qty	9 each
		3pol 6h	4pol 9h	5pol 9h	3pol 9h	4pol 6h	5pol 6h		
16	3	211103					10		
16	4				210916			10	
16	5				211104			10	
32	3	210788					10		
32	4				210747			10	
32	5				210791			10	

Plug TE with Multi-Grip

- Screw terminals
- Box terminals
- Nickel plated contacts
- High-temperature-resistant contact carrier
- Enclosure connection with thread and snap-in lock
- Special gland, simultaneous cable gland and seal
- Protection degree IP44



Fig.: Type 210792

2P+E Ampere	3P+E Poles	230V 50-60 Hz			400V 50-60 Hz			Qty	9 each
		3pol 6h	4pol 9h	5pol 9h	3pol 9h	4pol 6h	5pol 6h		
63	3	210735					5	535	
63	4				211102			5	595
63	5				210792			5	650

Plug TE with Multi-Grip

- Screw terminals
- Box terminals
- High-temperature-resistant contact carrier
- Nickel plated contacts
- Screwless enclosure connection, snap-in lock
- Special gland, simultaneous cable gland and seal
- Protection degree IP67



Fig.: Type 210711

2P+E Ampere	3P+E Poles	230V 50-60 Hz			400V 50-60 Hz			Qty	each
		3pol 6h	4pol 9h	5pol 9h	3pol 9h	4pol 6h	5pol 6h		
63	3	211127					5	535	
63	5				210710			5	715
125	5				210711			5	1235

Appliance Inlet Quick-Connect with Flange

- Screwless terminals
- Kontex contact
- Nickel plated contacts
- Flange 75 x 75 mm
- Protection degree IP44

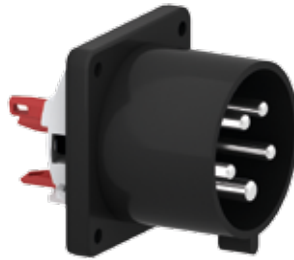


Fig.: Type 28298

2P+E Ampere	3P+E Poles	230V 50-60 Hz			400V 50-60 Hz			Qty	each
		3pol 6h	4pol 9h	5pol 9h	3pol 9h	4pol 6h	5pol 6h		
16	3	28312					10	90	
16	4				28313			10	105
16	5				28314			10	125
32	3	28315					10	145	
32	4				28316			10	165
32	5				28298			10	195

Connector Quick-Connect with Multi-Grip

- Screwless terminals
- Enclosure connection with thread and snap-in lock
- Kontex contact
- Nickel plated contacts
- Special gland, simultaneous cable gland and seal
- Protection degree IP44



Fig.: Type 310517

2P+E Ampere	3P+E Poles	230V 50-60 Hz			400V 50-60 Hz			Qty	each
		3pol 6h	4pol 9h	5pol 9h	3pol 9h	4pol 6h	5pol 6h		
16	3	310512					10		
16	4				310607			10	
16	5				310515			10	
32	3	310513					10		
32	4				310489			10	
32	5				310517			10	

Connector with Multi-Grip

- Screw terminals
- Box terminals
- High-temperature-resistant contact carrier
- Kontex contact
- Nickel plated contacts
- Screwless enclosure connection, snap-in lock
- Special gland, simultaneous cable gland and seal
- Protection degree IP44



Fig.: Type 310518

2P+E Ampere	3P+E Poles	230V 50-60 Hz			400V 50-60 Hz			Qty	each
		3pol 6h	4pol 9h	5pol 9h	3pol 9h	4pol 6h	5pol 6h		
63	3	310488					5	590	
63	4				310749			5	630
63	5				310518			5	670

Connector with Multi-Grip

- Screw terminals
- Box terminals
- High-temperature-resistant contact carrier
- Kontex contact
- Nickel plated contacts
- Enclosure connection with thread and snap-in lock
- Special gland, simultaneous cable gland and seal
- Protection degree IP67



Fig.: Type 310466

2P+E Ampere	3P+E Poles	230V 50-60 Hz			400V 50-60 Hz			Qty	each
		3pol 6h	4pol 9h	5pol 9h	3pol 9h	4pol 6h	5pol 6h		
63	3	310771					5	650	
63	5				310465			5	725
125	5				310466			5	1300

On Request

- Extension lead
- Cable gland MULTI-GRIP with additional strain Relief



Domestic Panel Mounting Socket Outlet

- 16A 250V ~
- Screw terminals
- Nickel plated contacts
- Without hinged lid
- Connection at rear
- Protection degree IP20

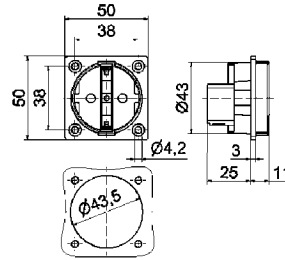


Fig.: Type 714

18 MB 1

Colour	Order no.	Qty
black	714	20

Domestic Panel Mounting Socket Outlet

- 16A 250V ~
- Nickel plated contacts
- With moulded flange seal
- Connection terminal in accordance with BGV A2
- Polyamide 6 contact carrier
- Protection degree IP54

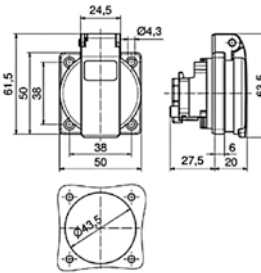


Fig.: Type 71101

18 MB 102

Version	Colour	Order no.	Qty
Quick-Connect	black	71101	20
Screw terminal	black	71097	20

Domestic Plug

- With Multi-Grip cable gland
- Spacious connection area
- Also suitable for Belgian/French system
- Protection degree IP44

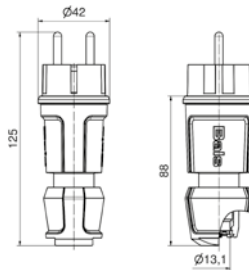


Fig.: Type 7372

18 MB 119

Colour	Order no.
black	7372

Domestic Connector

- With Multi-Grip cable gland
- Spacious connection area
- Protection degree IP54

In the case of Domestic Connectors with child-protection add 09 to the end of the order number.

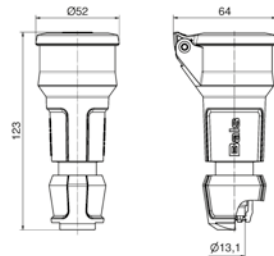


Fig.: Type 7488

18 MB 120

Colour	Order no.	Qty
black	7488	20

Solid-Rubber Enclosures

Components:

6 Domestic sockets 16A, 230V ~
(system F - German earthing System)

Cable entry / Input:

Cable gland M20

Order no.

530598 with blue domestic sockets

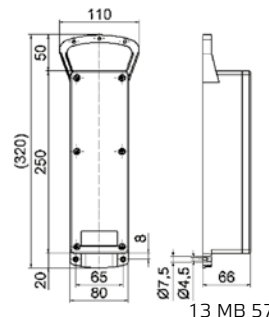
530599 with black domestic sockets



Fig.: Type 530598



Fig.: Type 530599



13 MB 57

Solid-Rubber Enclosures

Components:

6 Domestic sockets 16A, 230V ~
(system F - German earthing System)

Cable entry/Input:

CEE plug 32A, 400V, 5p with
lead 1,8 m H07RN-F5G6

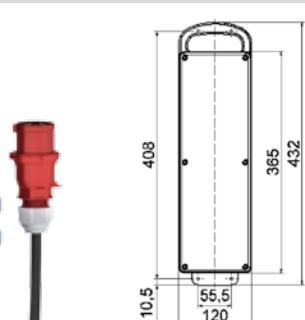
Order no.

530596 with 6 D-type MCBs 16A, 1p

530597 with 6 C-type MCBs 16A, 1p



Fig.: Type 530596



13 MB 7



The new EVOBOX series is the ideal solution for mobile power supply in industry, on construction sites or in event technology. The portable distributor series is available in 4 coordinated housing sizes and impresses with its high mechanical and thermal capacity.



Lateral recesses for inscription labels



Safe to stack even with different EVOBOX distributor sizes

- Light and easy-to-handle, using hard Polyethylene
- Overall protection degree of the distributor is IP54
- High mechanical and thermal capacity
- Perfectly stackable
- Maintenance-free Quick-Connect technology for CEE and domestic sockets
- Available in 4 different sizes
- Fuse elements protected under robust operating window
- No protruding components
- With 2 integrated carry handles
- Pre-punched recesses make it possible to affix inscription labels
- All distributors are equipped with an earthing screw (external earthing screw) outside the housing as standard
- Distributor outlets and fuse elements each separately on one side
- The fuse for the CEE socket phases is optionally 1 pole or multi-pole
- The internal wiring is designed for the highest possible safety via the specification standard
- The CEE sockets have been arranged so the IP67 plugs and sockets can be plugged in easily

- The domestic sockets are equipped with additional sealing edges as standard in accordance with DIN VDE 0620 for portable distributors.

Optional:

- All panel mounting sockets are available in version IP67
- Phase control lights are easily visible under operating windows
- The built-in connector systems are also available completely in black
- The housing can be blue, red and orange (quantity dependent)
- Installation of overvoltage protection



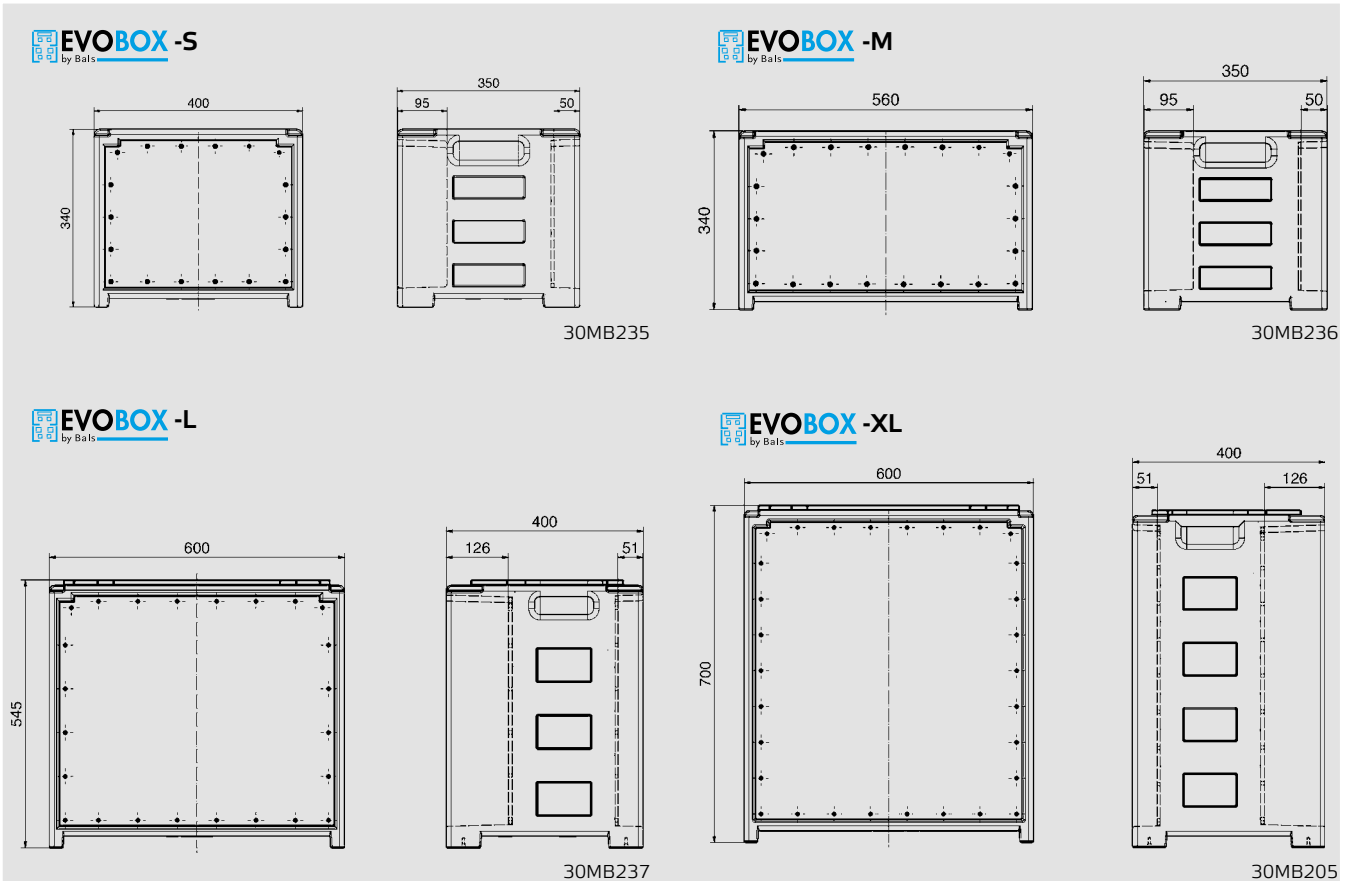
Optional also equipped with Power Lock



The 4 coordinated housing sizes of the EVOBOX



External earthing screw





 **Bals**
Simply. Well. Connected.

Bals Elektrotechnik GmbH & Co. KG
D-57399 Kirchhundem-Albaum
Phone: +49 27 23/771-0
Fax: +4927 23/771-177/178
E-mail: info@bals.com
Internet: www.bals.com